

# EMERGING EARLY COLLEGE MODELS FOR TRADITIONALLY UNDERSERVED STUDENTS

---

Elisabeth Barnett  
Beverly Brown  
Scott Jenkins  
Chery Wagonlander

National Early College Conference  
Dallas, TX - December, 2014



# Today's agenda

- Intro to Michigan's emerging models
- The policy context
- The higher education perspective
- Benefits and challenges



# ELISABETH BARNETT

---

AN INTRODUCTION TO EARLY MIDDLE COLLEGES  
IN MICHIGAN

# What's special about Michigan?

One of very few states that have:

- Developed early colleges as a major school reform strategy.
- A unique partnership among the state, an early college center, a state/national association, a research center, and philanthropy.
- State regulations and a culture that encourages innovation.
- An explicit connection to career-technical education.

# Early Colleges in Michigan

- Mott Middle College High School
- Development of more middle-early college high schools.
- More recently, new models that permit further expansion of early college strategies.

# Michigan's Early College Design Principles

(from Middle College National Consortium)

- 1) College-Focused Academic Program
- 2) Comprehensive Student Support
- 3) Dynamic High School/College Partnerships
- 4) Culture of Continuous Improvement

# Advancing the Work – Data Project

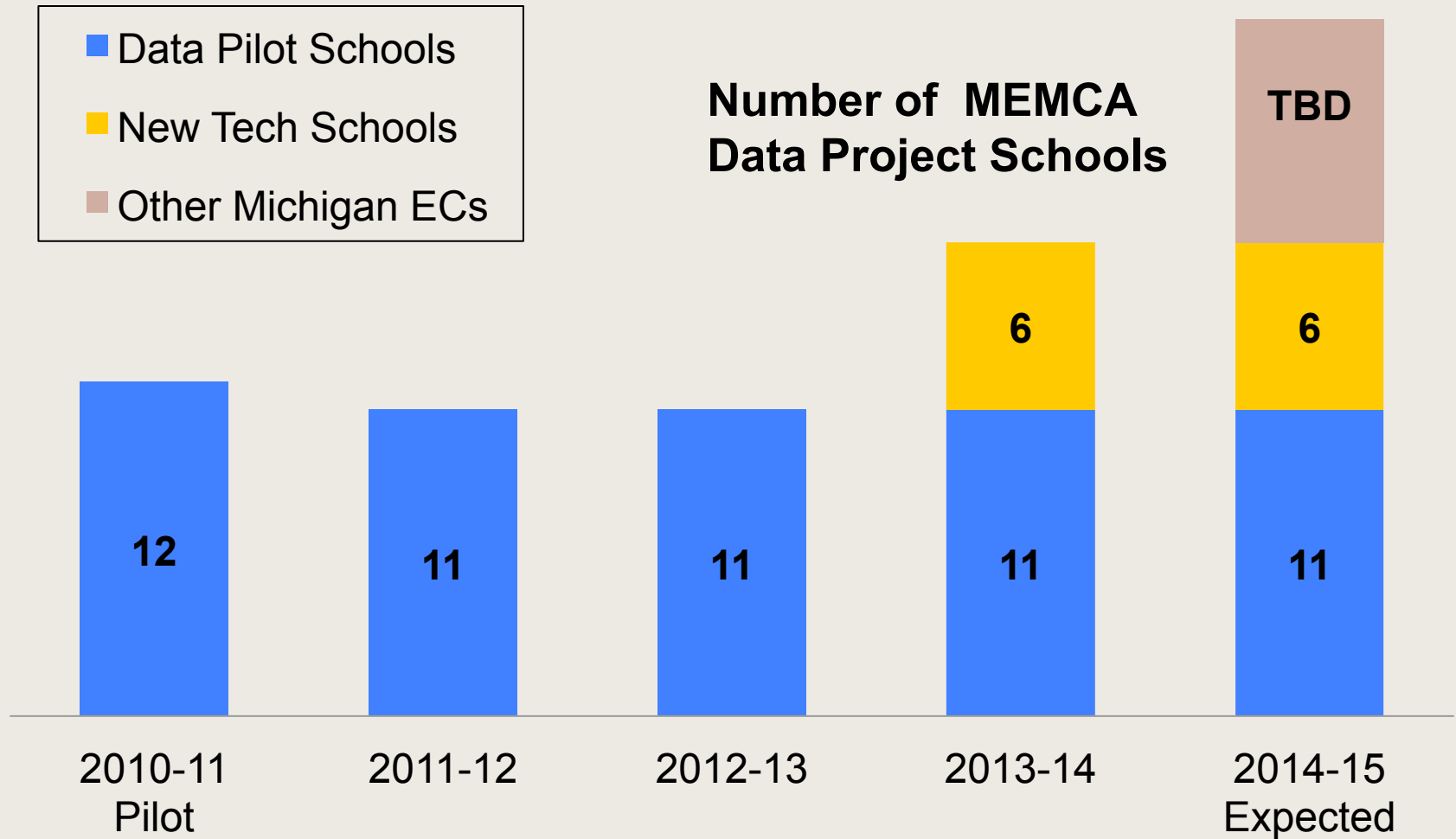
## MEMCA

- State association affiliated with a national association.
- Emphasizes peer learning and support.
- Bi-annual conferences (Aug11- 45 attended, Aug14-152) and other events.
- Housed at Mott Community College (MCECP)

## NCREST

- National research and development center based at Columbia University.
- 12 years as a strategic partner of M-ECs.
- Produces school-level reports for use in continuous improvement and PR.

# MEMCA Data Project Schools



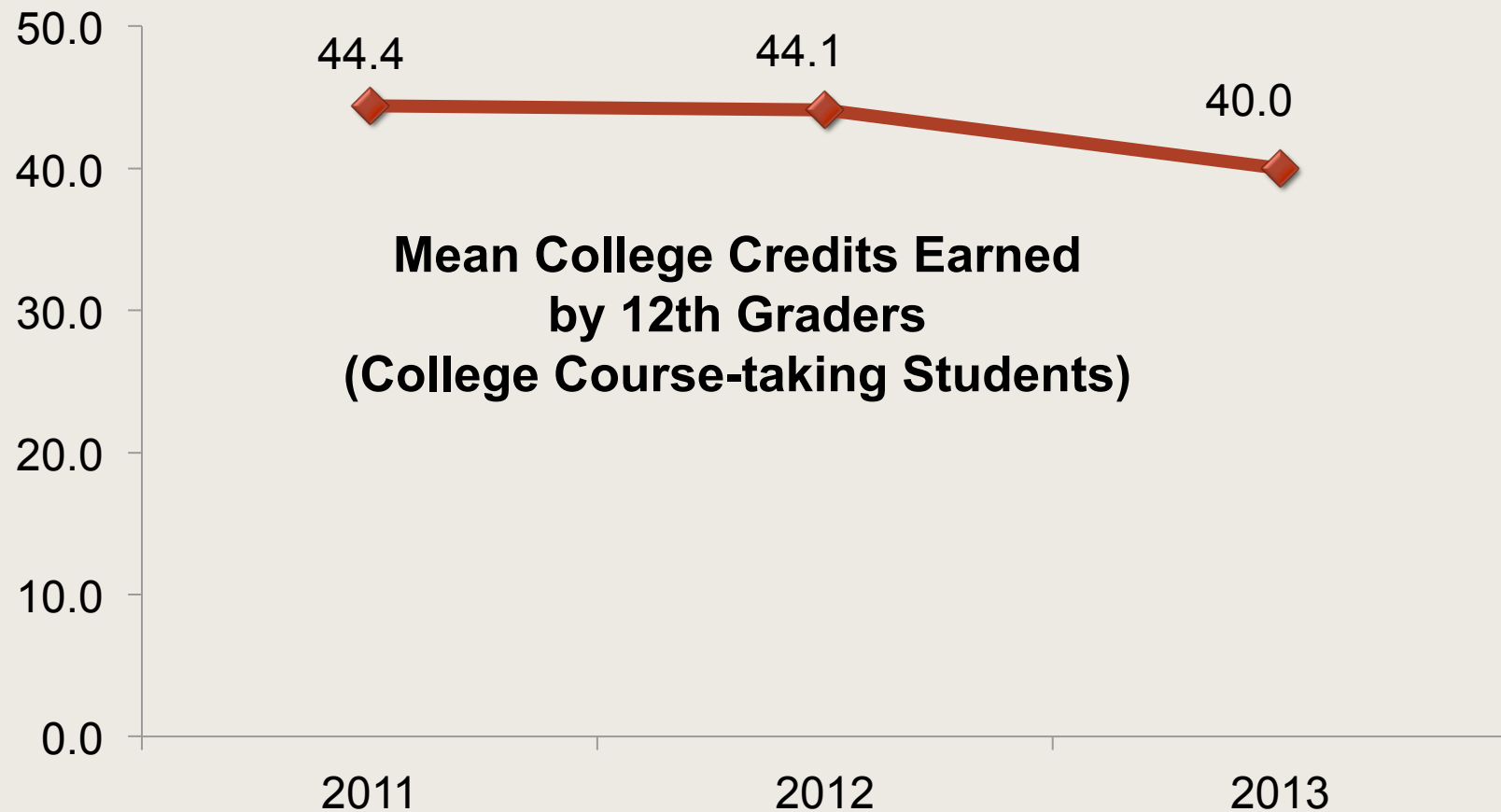


# College In High School

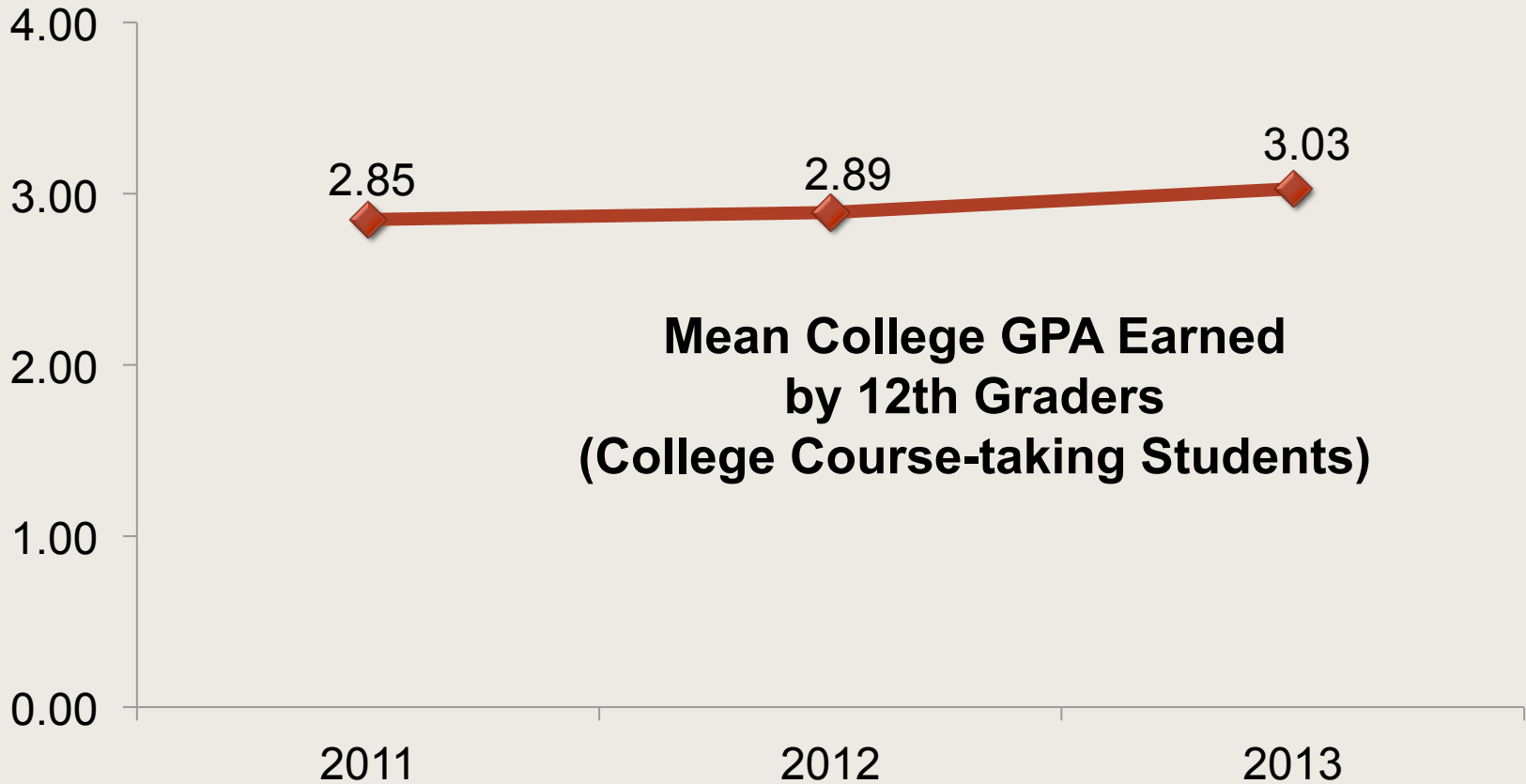
2012-13 Grade	Number of College Course-taking Students	Cumulative College Coursework		
		Average GPA	Average Credits Earned	Percent of Courses Passed (C grade or higher)*
9th graders	39	3.49	1.9	95%
10th graders	486	3.23	7.3	92%
11th graders	761	3.10	20.7	92%
12th graders	512	3.03	40.0	92%
13th graders	239	2.68	46.2	84%
<b>Total</b>	<b>2,037</b>	<b>3.07</b>	<b>25.0</b>	<b>90%</b>

\*Percentage of Courses Passed (C grade or higher): Includes A, B, C, P (Passing), D and F grades in the calculation

# College Credits Earned



# College GPA



# Emerging models

With a partner,  
identify three  
variations on early  
college that you  
have heard of.....

5 minutes



# Two Emerging Models

## **5<sup>th</sup> year programs**

- Schools apply to the state for approval.
- They formalize agreement with an IHE
- Cohort of students prepare for and take college courses.
- They stay for a fifth year of free college.

## **Enhanced dual enrollment systems**

- Whole school model.
- Schools reach out to “academic middle” students.
- Students take dual enrollment *with supports*.
- 12 x12 is the goal.

# Other MI Models and Variations

- STEM early colleges
- Career academies (e.g., health, manufacturing)
- Different grade ranges served: 9-13<sup>th</sup> or 11-13<sup>th</sup> grade models
- Multiple districts send students to one college program.

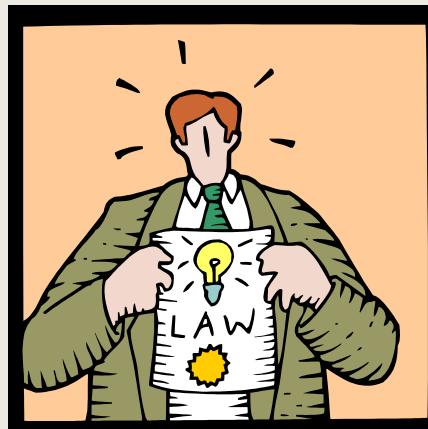
# BEVERLY BROWN

---

THE POLICY CONTEXT FOR EARLY MIDDLE  
COLLEGES IN MICHIGAN

# The Policy Context

- The "Dual Enrollment" Bills
  - Michigan State Legislature passed Public Act 160 of 1996, the Postsecondary Enrollment Options Act and
  - Public Act 258 of 2000, the Career and Technical Preparation Act
- \$2 million in grants were awarded to six new "Middle Colleges" to address the shortage of health care workers in Michigan (Gov. Granholm, 2006)





# The Policy Context

- Increased the number of college courses that EMC students could take while in high school
- Allowed for identification of EMCs as unique five-year high schools within Center for Educational Performance and Information (CEPI) directory system
- Permitted districts to collect foundation allowances for 5<sup>th</sup> year EMC students
- Granted flexibility with student tracking in the Single Record Student Database (SRSD) flagging EMC students as program or stand-alone high school pupils

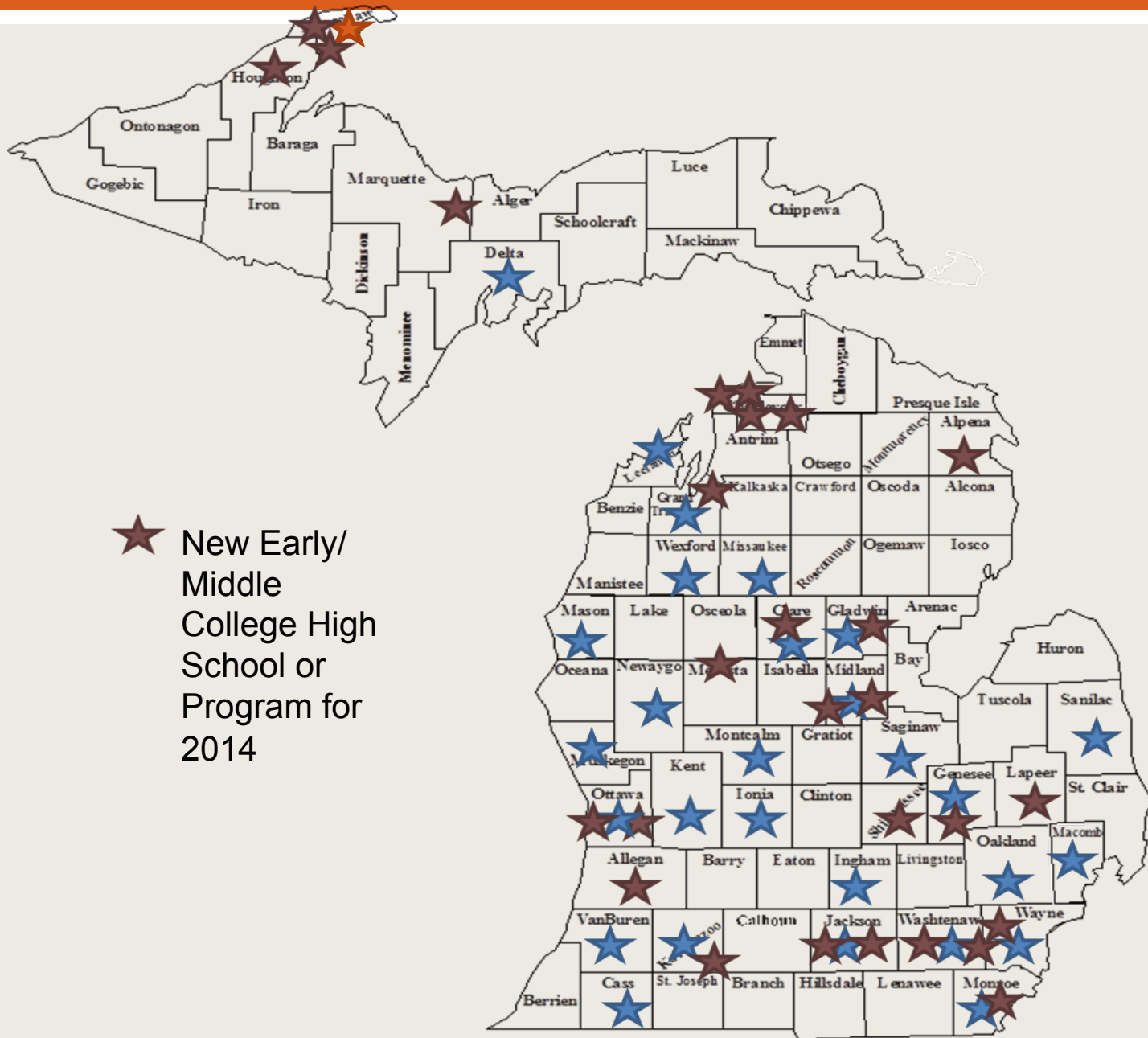
# The Policy Context

- Secured a waiver from the U.S. Dept. of Education to allow EMC students to be considered on-time graduates after five years for AYP reporting
- Authorized MEMCA to award certificates to EMC students who miss the 60 credit mark so that they can still be considered as on-time graduates
- Permitted sites other than the high school as eligible locations for earning concurrent credit (Gov. Snyder's 2011 learning model of "Any Time, Any Place, Any Way, Any Pace")

# The Policy Context

- Encouraged districts to exercise school choice options allowing the release of a student from one school to another, including entry into an EMC
- Fostered additional data collection to measure impact and effectiveness to maintain quality (via assurances on formal EMC application)

**These multiple policy changes  
have resulted in this:**



# How does Michigan Promote EMCs?

- Policy changes speak for themselves; bipartisan support
- Annual “Getting Started” Workshop for new EMCs
- MEMCA word of mouth

# The Role of CTE at MDE

- Coordination
- Receive, approve and register new EMCs
- Provide technical assistance in the form of regional cluster meetings and implementation guidance
- Recordkeeping
- FAQs
- Website maintenance
- Liaison with CEPI for data collection

# SCOTT JENKINS

---

THE CENTER FOR MICHIGAN EARLY COLLEGE  
PARTNERSHIPS; MOTT COMMUNITY COLLEGE

# ABOUT MCECP

- Michigan Center for Early College Partnerships—started in 2005 with support from the Mott Foundation.
- Unique partnership among MDE, Mott Foundation, and Mott Community College.
- Its mission is to foster the development of early colleges in the state.
- Main activities include.....



# Higher education perspective

- Why colleges in Michigan are encouraging these early colleges
- How early colleges fit within the college's mission and priorities
- Benefits and challenges for the college.

# CHERY WAGONLANDER

---

OPERATIONALIZING EARLY MIDDLE COLLEGES IN  
MICHIGAN

# EARLY MIDDLE COLLEGE MODELS IN MICHIGAN

- **EMC Schools**
  - Requires comprehensive reporting and accountability, but allows for more control
  - Requires an MDE EMC application and approval
- **EMC Programs**
  - More flexibility, less reporting
  - Requires an MDE application and approval
- **Enhanced Dual Enrollment System (4-year system)**
  - No MDE application required/ lighter budget impact
  - “12 x 12” model.
- **Recent and future work: STEM early colleges, whole school/whole district EC.**

# Positive Outcomes Beyond the Data

## *School culture change:*

- Scholarly environment
- Purposeful work around college and career readiness
- Culture of caring
- Hopefulness, excitement about the future.

*Seamless transition comes to life!*

# MEMCA Overview

- Michigan Early Middle College Association (MEMCA)
  - Leadership Team
  - Technical Assistance
  - Peer-to-Peer Networking
  - Fosters Sustainability
  - Extension of Michigan Department of Education



# Lessons Learned

- Silos were larger than one might realize; relationships break them down.
- All educators have to be researchers
- Change in teachers' instructional practice
- Work must be purposeful
- There are gaps in educational sequences throughout the system
- Students really CAN turn themselves around!

# Q and A Reflections

# Contact information

- Elisabeth Barnett, Associate Director, NCREST, Teachers College, Columbia University, [barnett@tc.edu](mailto:barnett@tc.edu)
- Chery S. Wagonlander, Executive Director, Center for Michigan Middle & Early College Partnerships, [chery.wagonlander@mcc.edu](mailto:chery.wagonlander@mcc.edu)
- Scott Jenkins, Vice President of Student and Administrative Services at Mott Community College, [scott.jenkins@mcc.edu](mailto:scott.jenkins@mcc.edu)
- Beverly Brown, Program Consultant in the Office of Career and Technical Education (OCTE) at the Michigan Department of Education (MDE). [BrownB21@michigan.gov](mailto:BrownB21@michigan.gov).